

IWAKI Air Pump

APN-215

Instruction Manual

 Read this manual before use of product

Thank you for selecting an IWAKI APN-215 air pump. This instruction manual deals with "Safety Instructions", "Outline", "Installation", "Operation" and "Maintenance" sections.

Please read through this instruction manual to ensure the optimum performance, safety and service of your pump.

Contents

Safety Instructions	1
<i>Outline</i>	
1. Unpacking & Inspection	4
2. Operating principle	4
3. Identification code	5
4. Specifications	6
5. Outer dimension	7
6. Performance curve	8
7. Overview & Label	10
8. Part names & Structure	11
<i>Installation</i>	
1. Before installation	13
2. Installation/Tubing/Electrical wiring	15
<i>Operation</i>	
1. Before operation	17
2. Pump operation	18
<i>Maintenance</i>	
1. Troubleshooting	20
2. Maintenance & Inspection	20
3. Wear part replacement	22
EC DECLARATION OF CONFORMITY	24
Waste Electrical and Electronic Equipment (WEEE)	24



This instruction manual should be kept on hand by the end user for quick reference.

Contact us or your nearest distributor if you have any questions.



Important Instruction

For the Safe and Correct Handling of the Pump

- "Safety Instruction" section deals with important details about handling of the product. Before use, read this section carefully for the prevention of personal injury or property damage.
- Observe the instructions accompanied with "WARNING" or "CAUTION" in this manual. These instructions are very important for protecting pump users from dangerous situations.
- The symbols on this instruction manual have the following meanings:

 WARNING	Nonobservance or misapplication of the contents of "Warning" section could lead to a serious accident which may result in death.
 CAUTION	Nonobservance or misapplication of the contents of "Caution" section could lead to personal injury or property damage.

Types of Symbols

	Indicates a prohibited action or procedure. Inside or near this circle, a concrete and practical image of the activity to be avoided is depicted.
	Indicates an important action or procedure which must be performed or carried out without fail. Failure to follow the instructions herein can lead to malfunction or damage to the pump.

Export Restrictions

Technical information contained in this instruction manual might be treated as controlled technology in your countries, due to agreements in international regime for export control.

Please be reminded that export license/permission could be required when this manual is provided, due to export control regulations of your country.

Safety Instructions

WARNING

- **Turn off power before service**

Risk of electrical shock. Be sure to turn off power to stop the pump and related devices before service is performed.



Electrical shock

- **Do not use the pump in any condition other than its intended purpose**

The use of the pump in any conditions other than those clearly specified may result in failure or injury. Use this product in specified conditions only.



Prohibited

- **Do not modify the pump**

Alterations to the pump carries a high degree of risk. It is not the manufacturer's responsibility for any failure or injury resulting from alterations to the pump.



No remodeling

- **Wear protective clothing**

Always wear protective clothing such as an eye protection, chemical resistant gloves, a mask and a face shield during disassembly, assembly or maintenance work.



Wear protectors

WARNING

- **Use specified power only**

Do not apply power other than that specified on the nameplate. Otherwise failure or fire may result. Ensure the pump is properly grounded.



- **Do not damage the power cable**

Do not pull, knot, or crush the power cable. Damage to the power cable could lead to a fire or electrical shock if cut or broken.



Prohibited

- **Do not operate the pump in a flammable atmosphere**

Do not place explosive or flammable material near the pump.



Electrical shock

Safety Instructions

CAUTION

• Qualified personnel only

The pump should be handled or operated by a qualified personnel with a full understanding of the pump.



• Ventilation

Fumes or vapours can be hazardous with certain solutions. Ensure proper ventilation at the operation site.



• Do not install or store the pump:

1. Where ambient temperature falls below 0°C or exceeds 40°C.
2. Under a flammable/corrosive atmosphere.



Prohibited

• Spill precautions

Ensure protection and containment of solution in the event of plumbing or pump damage (secondary containment).



• Keep electric parts and wiring dry

Risk of fire or electric shock. Install the pump where it can be kept dry.



Prohibited

CAUTION

• Do not use a damaged pump

Use of a damaged pump could lead to an electric shock or death.



Prohibited

• Stop operation

If you notice any abnormal or dangerous conditions, suspend operation immediately and inspect/solve problems.



Electrical shock

• Do not use the pump in a wet location

The pump is not waterproof. Use of the pump in wet or extremely humid locations could lead to electric shock or short circuit.



Prohibited

• Do not touch the pump or pipe with bare hands

Risk of burning. The surface temperature of the pump or pipe rises high along with liquid temperature in or right after operation.



Caution

• Electromagnetic precautions

This product is not protected against an electromagnetic field. Take appropriate measures as necessary.



Safety Instructions

CAUTION

- **Damaged power cable**

Do not use any damaged power cable for the prevention of a fire or electrical shock. The cable is not replaceable, so that the whole pump unit needs to be replaced when the cable is damaged.



Prohibited

- **Disposal of a used pump**

Dispose of any used or damaged pump in accordance with local rules and regulations. See page 24 to comply with the European Directive 2012/19/EU on waste electrical and electronic equipment.



- **Release the pressure from the discharge line**

Solution in the discharge line may be under pressure. Release the pressure from the discharge line before disconnecting plumbing or disassembly of the pump to avoid solution spray.



CAUTION

- **Preventative maintenance**

Follow instructions in this manual for replacement of wear parts. Do not disassemble the pump beyond the extent of the instructions.



- **Grounding**

Risk of electric shock! Always properly ground the pump. Conform to local electric codes.



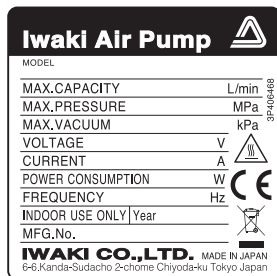
Grounding

Before use, check the specification, limitation and hazardous nature of the pump.

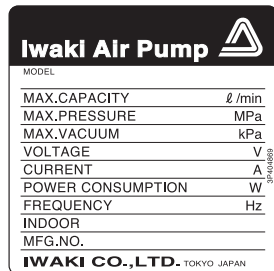
1. Unpacking & Inspection

Open the package and check that the product conforms to your order. If any problem or inconsistency is found, immediately contact your distributor.

1. Check the nameplate to see if the information such as model codes, discharge capacity and discharge pressure are as ordered.



Spec label for the European market



Spec label for any area other than the European market

*The CE marking on our product(s) is for us to market the product(s) into the European market, however, the CE marking does not ensure any safety or conformity of the product(s) outside the European market.

When the pump is incorporated into the equipment marketed in the European market, such equipment must meet all the requirements of applicable directives.

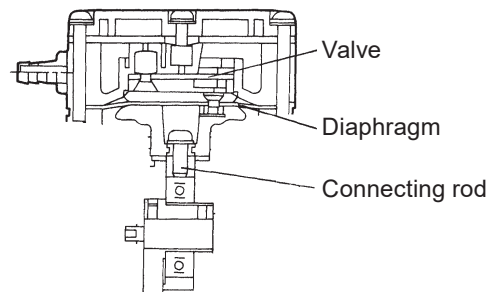
In such a case, any person who places the equipment on the market must carry a CE mark on the equipment as a manufacturer.

2. Check for transit damage, deformation and loose bolts.

2. Operating principle

The APN-215 is a diaphragm type air pump and is designed to be built into various devices.

The rotary motion of the motor is converted through a connecting rod to the reciprocation of the diaphragm in the pump chamber, where gas is transferred from the inlet to outlet.



3. Identification code

APN - P 215 M V X - 1 - 01
a b c d e f g

a. Pump head

No code : Single head

S : Dual-head with In-line tubing

P : Dual-head with parallel tubing

b. Series code

c. Intended use

M : Vacuum

C : Compression

N : Vacuum/Compression

d. Diaphragm/Valve materials

E : EPDM

V : FKM

e. Pump connection

No code : ø9 tube connection

X : G1/8 female thread connection (JIS parallel pipe thread)

f. Power voltage

1 : 100VAC

2 : 200VAC

3 : 115VAC

4 : 220/240VAC

E4 : 220/240VAC (3-core cabtyre cable)

g. Special specification

No code : Standard

01-99 : Special design

4. Specifications

■ Pump

Type	Max. air flow (L/min)	Max. discharge pressure (MPa)	Max. vacuum (kPa) abs.	Connection		Weight (kg)	Lowest starting temp. (°C)			
				Tube	Thread		100V	115V	200V	220/240V
APN-215M	15/18	-	26.66	ø9	G1/8	3.5	0	0	0	0
APN-215C		0.2	-							
APN-215N		0.1	40.00							
APN-P215M	30/36	-	26.66			5.2	0	0	0	0
APN-P215C		0.2	-							
APN-P215N	28/32	0.1	40.00				5	5	5	5
APN-S215M	15/18	-	8.00							

■ Motor

Type	Input power (W)				Output power (W)	Power current (A)			
	100V	115V	200V	220/240V	100/115/200/220/240V	100V	115V	200V	220/240V
APN-215M	64/64 (50/60Hz)				30/30 (50/60Hz)	0.75/0.68 (50/60Hz)	0.56 (60Hz)	0.38/0.34 (50/60Hz)	0.30 (50Hz)
APN-215C									
APN-215N									
APN-P215M	95/95 (50/60Hz)				45/45 (50/60Hz)	1.0/1.0 (50/60Hz)	0.93 (60Hz)	0.52/0.54 (50/60Hz)	0.50 (50Hz)
APN-P215C									
APN-P215N									
APN-S215M									

NOTE 1. Observe the allowable maximum discharge pressure.

NOTE 2. Allowable gas temperature range is 0-40°C.

NOTE 3. Allowable ambient temperature range is 0-40°C. Observe the lowest starting temperature at the start of operation.

NOTE 4. The max air flow, discharge pressure and vacuum are based on the operation with ambient air of 20°C and may change with gas/room temperature.

NOTE 5. Allowable maximum noise level is 58dB at 1m (A scale).

■ Gas contact materials

Model code	APN-215N		APN-215C		APN-215M	
Diaphragm/valve	V	E	V	E	V	E
Pump head	GFRPA		ADC12		GFRPP	
Valve seat	GFRPPS					
Valve	FKM	EPDM	FKM	EPDM	FKM	EPDM
Diaphragm						
Retainer plate	GFRPPS					
Screw	SUS304 or equivalent					
Seal gasket	FKM	EPDM	-		FKM	EPDM
Pump head cover	SUS304				GFRPP	

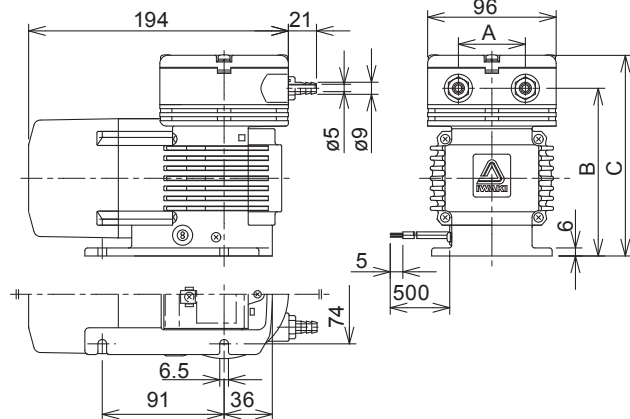
NOTE: The separate fitting is made of GFRPE.

ADC12 : Aluminium die casting Alloy
 EPDM : Ethylene propylene diene monomer
 FKM : Fluorine-contained rubber
 GFRPA : Glass fibre reinforced polypropylene resin
 GFRPP : Glass fibre reinforced polypropylene
 GFRPPE : Grass fibre reinforced polyphenyleneether
 GFRPPS : Glass fibre reinforced polypropylene sulfide
 SUS304 : Austenite stainless steel

5. Outer dimension

■ APN-215M/-215N/-215C

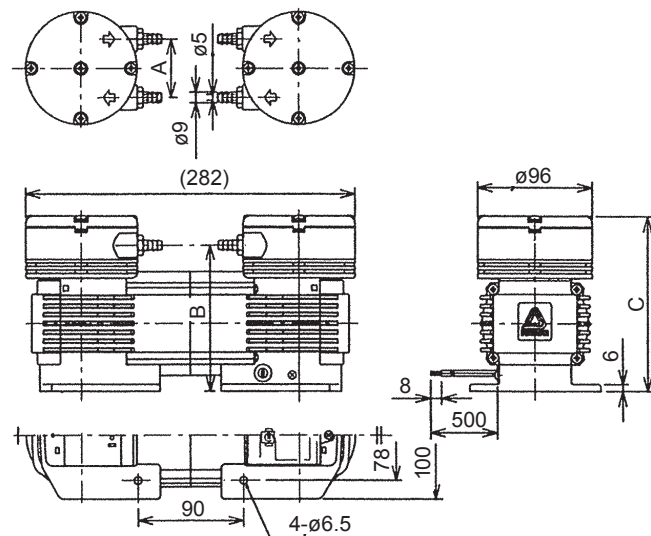
(mm)



	APN-215M	APN-215N	APN-215C
A	50	50	39
B	125	125	130
C	151	147	140

■ APN-P215M/-P215N/-P215C

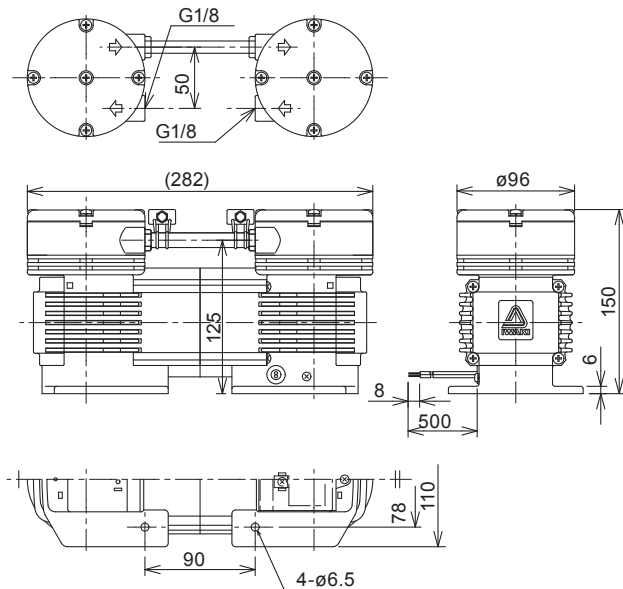
(mm)



	APN-P215M	APN-P215N	APN-P215C
A	50	50	39
B	125	125	130
C	151	147	140

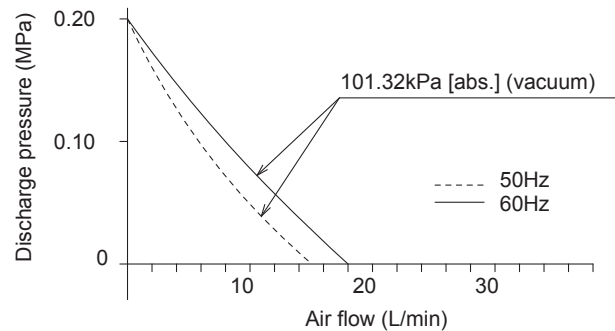
■ APN-S215M

(mm)

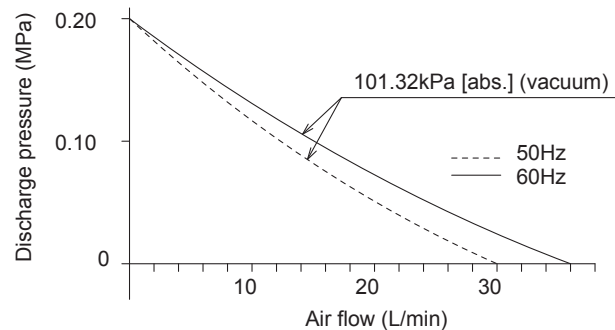


6. Performance curve

■ APN-215C (max 0.2MPa)

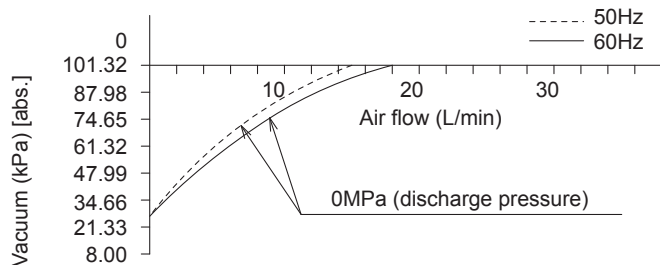


■ APN-P215C (max 0.2MPa)

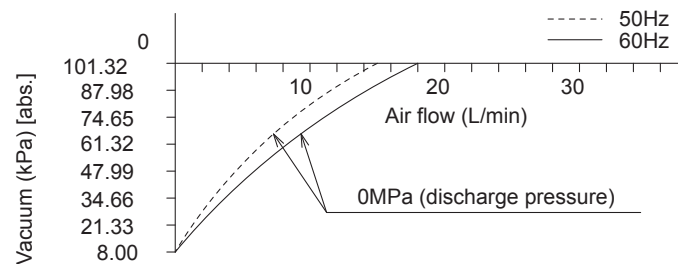


Outline

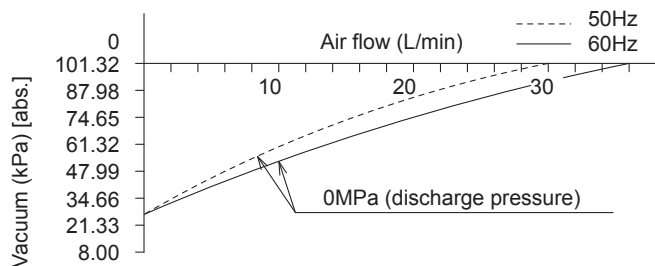
■ APN-215M



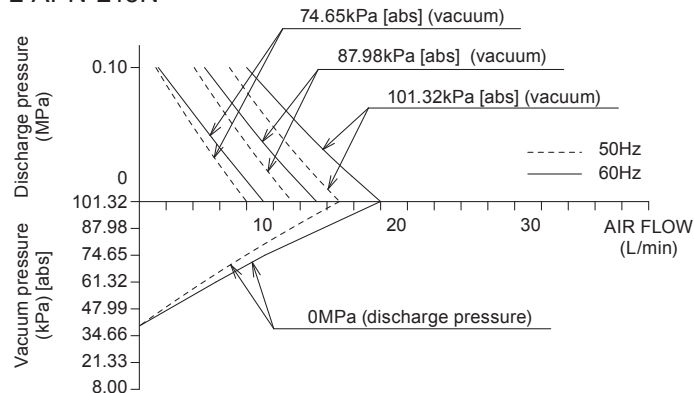
■ APN-S215M



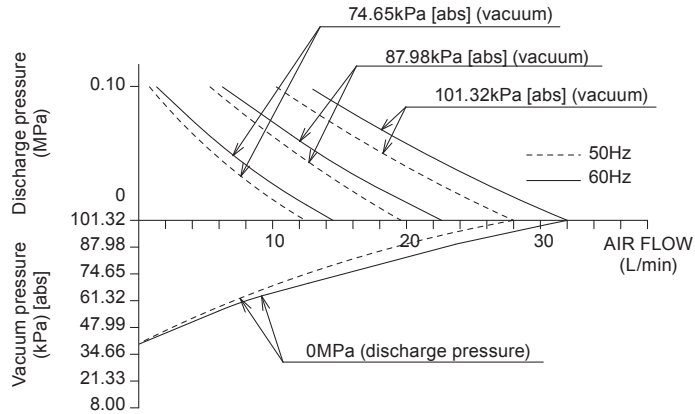
■ APN-P215M



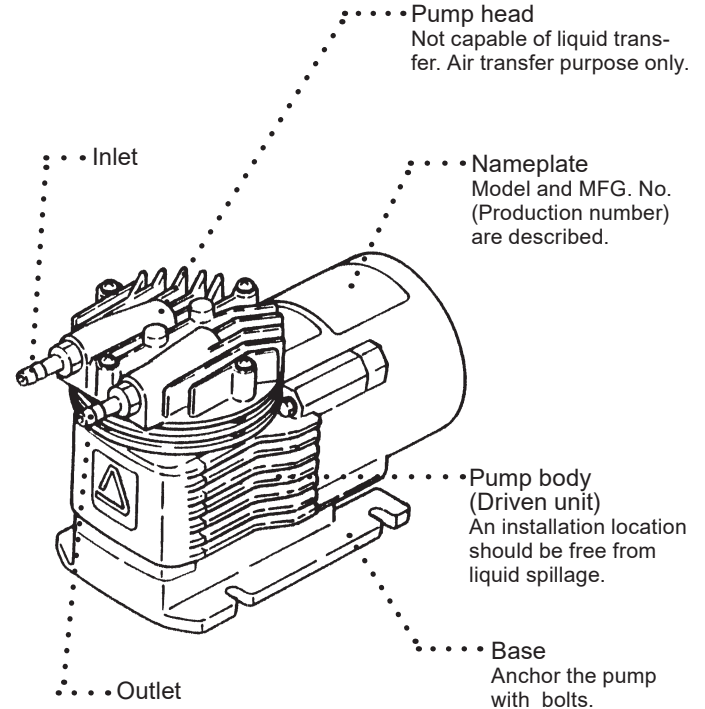
■ APN-215N



■ APN-P215N

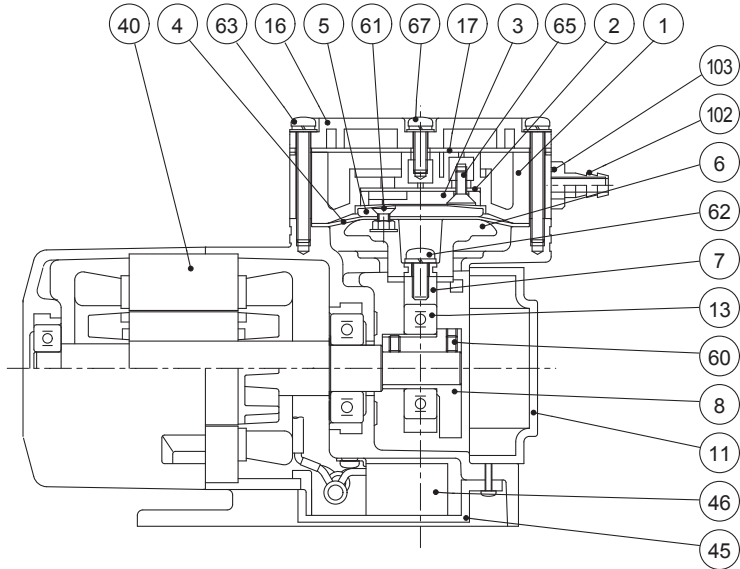


7. Overview & Label



8. Part names & Structure

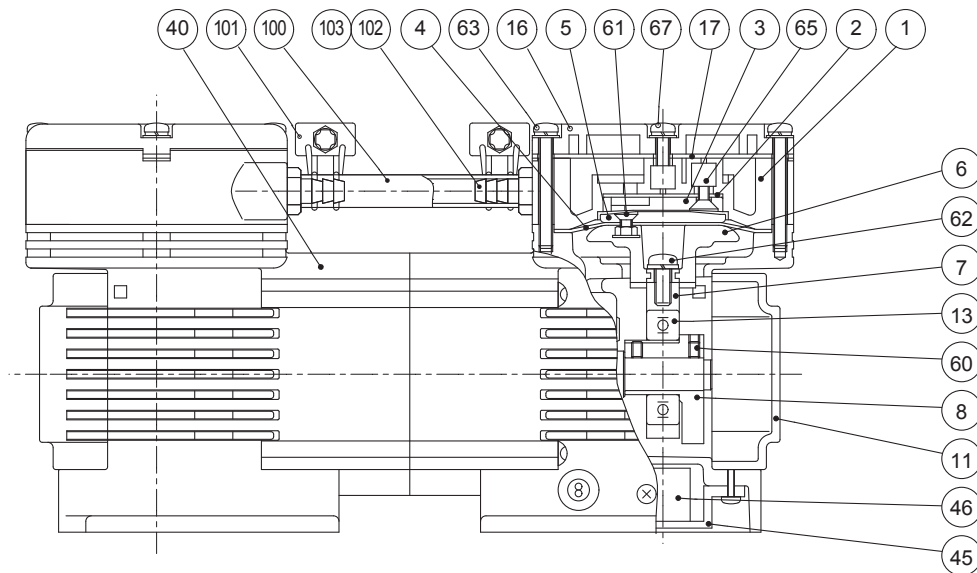
■ APN-215M/-215C/-215N



No.	Part names	Q'ty
1	Pump head	1
2	Valve	1
3	Valve seat	1
4	Diaphragm	1
5	Retainer plate	1
6	Connecting rod A	1
7	Connecting rod B	1
8	Eccentric	1
11	Bracket cover	1
13	Bearing (#6004)	1
16	Pump head cover (M/N type)	1
17	Seal gasket (M/N type)	1
19	Connecting rod unit	1
40	Motor	1
45	Capacitor cover	1
46	Capacitor	1
60	Set screw (M4)	2
61	Screw (M4×8)	4
62	Screw with washer (M6×15)	1
63	Screw with washer	4
65	Screw	2
67	Screw (M/N type)	1
102	Fitting	2
103	O ring	2

Outline

■ APN-S215M/-P215M/-P215C/-P215N



No.	Part names	Q'ty
1	Pump head	2
2	Valve	2
3	Valve seat	2
4	Diaphragm	2
5	Retainer plate	2
6	Connecting rod A	2
7	Connecting rod B	2
8	Eccentric	2
11	Bracket cover	2
13	Bearing (#6004)	2
16	Pump head cover (M/N type)	2
17	Seal gasket (M/N type)	2
19	Connecting rod unit	1
40	Motor	1
45	Capacitor cover	1
46	Capacitor	1
49	Spacer	2
60	Set screw (M4)	4
61	Screw (M4x8)	8
62	Screw with washer (M6x15)	2
63	Screw with washer	8
65	Screw	4
67	Screw with washer	2
100	Hose (S215M)	1
101	Hose band (S215M)	2
102	Fitting	4
103	O ring	4

Installation

1. Before Installation

Read through instructions in this section to ensure the optimum performance, safety and service of your pump.



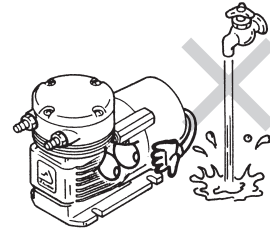
CAUTION

- **Do not operate the pump in a flammable atmosphere**

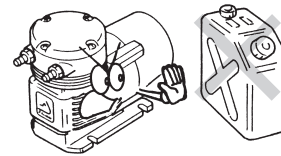
Do not place explosive or flammable material near the pump.

- **Do not use a damaged pump**

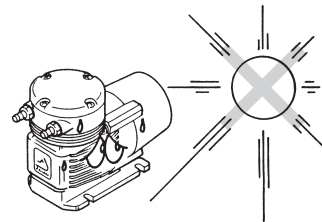
Use of a damaged pump could lead to an electric shock or death.



- Install the pump where it can be kept dry. Avoid using wet gas, or internal condensation will build up and consequently result in the short lives of the valve and diaphragm.

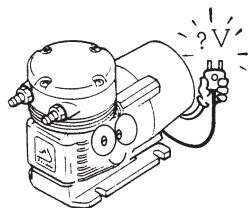


- Do not install the pump in a corrosive or flammable gas atmosphere. Keep good ventilation in a working area.

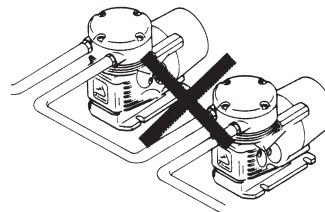


- Ambient temperature should not fall below 0°C or exceed 40°C. Observe the allowable gas temperature range of 0 and 40°C.

Installation



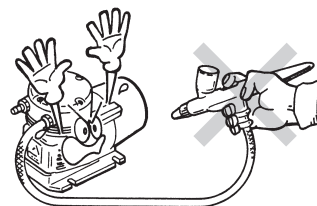
- Observe the rated voltage specified on the name plate. Applying any voltage than the rated one may result in failure.



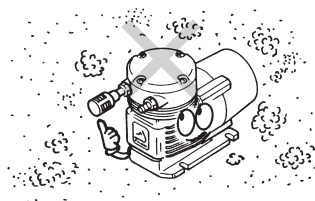
- Do not tube two or more pumps in series. It may prevent the motor from starting and lead to a burnout.



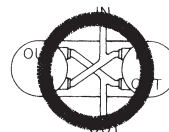
- Surface temperature may rise high in operation. Do not touch the pump body directly or place the objects which may be deformed by heat close to the pump.



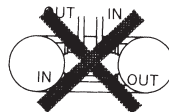
- The vacuum use type (APN-215M), the compression use type (APN-215C), and the combination (APN-215N) types are selectable. Select the best pump type for your purpose.



- Do not use the pump in a dusty place. Be sure to provide the inlet with a filter to prevent foreign matters from getting into the pump. Otherwise, the pump performance may reduce or the lives of the valves and diaphragm remarkably shorten.



- The APN-P215 pump (dual-head type with parallel tubing) must be plumbed in parallel. No series tubing is allowed.



Installation

2. Installation/ Tubing/ Electrical wiring



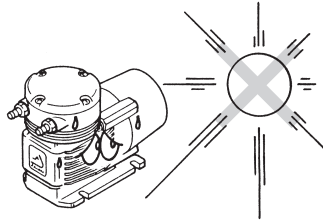
WARNING

If you notice any abnormal or dangerous conditions, suspend operation immediately and inspect/solve problems.

2.1 Installation

1. Installation location

- Do not expose the pump to direct sunlight, vibration and wind & rain.
- Select a level location, free from vibration, that won't hold liquid.
- Keep good ventilation. The pump should always be free from the possibility of getting wet.
- Ambient temperature should not fall below 0°C or exceed 40°C.
- Ambient humidity should not fall below 35%RH or exceed 90%RH.
- Allow sufficient space around the pump for easy access and maintenance.



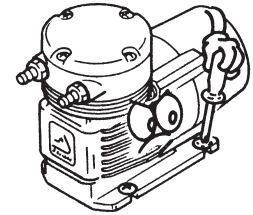
2. Pump fixation

Set the pump baseplate on a concrete foundation and fasten anchor bolts tightly to prevent the pump from vibrating during operation.



CAUTION

Do not install the pump on an unstable place.



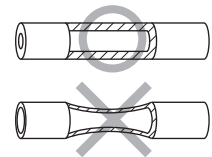
2.2 Tubing

1. The short tubing with the minimum bends is optimal to reduce resistance.
2. Use the vinyl tubes sustainable under the maximum possible pressure.



CAUTION

Do not have tubing bent or pressed. Otherwise, the tube end may break.



Installation

3. Select proper tube size, otherwise liquid leaks and failure may result.

CAUTION

Use of a wrong tube size bears the risk of coming off, causing an air leak.

4. Install valves on both discharge and suction lines.
 - Suction valve:
For adjustment of an air flow and a vacuum.
5. Push the tubes into the inlet and outlet as far as they will go.

NOTE: If the suction line connection is imperfect, the pump entrains air and so the full performance will not be achieved.

2.3 Electrical wiring

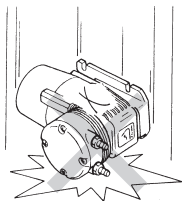
Electrical wiring must be performed by a qualified electrician. It is not the manufacture's responsibility for personal injury or property damage resulting from unauthorized service. Contact us or your nearest distributor for wiring as necessary.

■ Before wiring

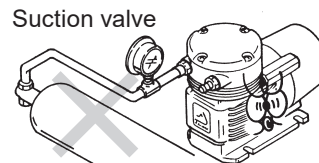
1. Check that the main power is turned off.
2. Electrical work should be performed in accordance with local electric codes, with an appropriate wire gauge or so.
3. Apply the specified power voltage. See the spec label.
4. When an earth leakage breaker is used and has tripped, always investigate and solve root causes. Be sure to unplug the pump before investigation is performed.

Operation

1. Before operation

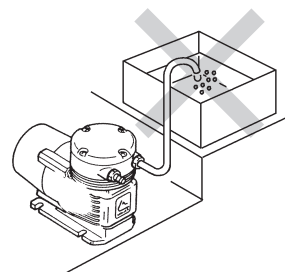


- Use care handling the pump. Do not drop. An impact may affect pump performance.



Do not increase suction line pressure

- The pump can not start with full discharge/suction pressure. Remove pressure before operation.



- After a long period of stoppage, pump performance at the beginning of operation becomes occasionally unstable. In this case, warm the pump up for 10 minutes with no discharge line pressure.

- If the compressed air (higher pressure than atmospheric pressure) is transferred to the pump, sharp deterioration to the lives of the valve, diaphragm and bearing may result. Always keep atmospheric or lower pressure in the suction line.

- Injection point must be below the pump position. Or siphon action/back flow may result.

- Do not clean the pump or nameplate with a solvent such as benzene, alcohol or thinner. This may discolour the pump or erase printing. Use a dry or damp cloth or a neutral detergent.

2. Pump operation

■ Start-up

1. Before pump operation, check that each tube connection is secured.
2. Check that a suction line is connected to the inlet and a discharge line to the outlet.

CAUTION

If a suction line and a discharge line are connected the other way around, pumping process is inverted.

3. Check that the pump is firmly fixed on a mounting position.

■ Operation

Operate the pump according to the following steps.

No.	Procedure	Points to be Checked
1	Check tubing, wiring and voltage.	<ul style="list-style-type: none">• Check installation, tubing and wiring are properly done and wiring system is fused.• Check the spec label to see if power supply voltage is correct.
2	Open valves.	<ul style="list-style-type: none">• Fully open both discharge and suction lines.
3	Supply power to the pump.	<ul style="list-style-type: none">• Smooth starting may not be obtained when ambient temperature is 10°C or below. In this case, run the pump with no discharge line pressure for a few minutes to warm it up.
4	Adjust air flow.	<ul style="list-style-type: none">• Provide a running-in period before full scale operation.• Always adjust an air flow by a suction valve.

Operation

5	Check the operation	<ul style="list-style-type: none">• After starting, check a pressure gauge to see if suction and discharge line pressure are correct and an air flow meter to see if the specified air flow is obtained.• Keep a suction line pressure at or below atmospheric pressure.• In case electric power has failed while the pump is running, switch off main power. Otherwise, the motor may not restart or may burn out depending on a line pressure at the time of power recovery.
---	---------------------	--

■ Stop and Storage

Before a long period of stoppage (1 week or more):

- Release pressure from the pump/tubing and turn off the main power.
- Keep the inside of the pump head free from residual gas.

Before resuming operation:

- Operation may occasionally be upset in the beginning. In this case, warm up the pump with no load operation.
- Follow the operation table to resume operation.

Maintenance

1. Troubleshooting

If you notice any abnormal or dangerous conditions, suspend operation immediately and inspect/solve problems. Contact us or your nearest distributor as necessary.

Phenomenon					Measures
	Pump does not run.	Pump stops running.	Poor air flow or discharge pressure	Pump makes noise.	
No power distribution	<input type="radio"/>	<input type="radio"/>	<input type="radio"/>	<input type="radio"/>	Check wiring.
Motor trouble (disconnection or capacitor failure)	<input type="radio"/>	<input type="radio"/>	<input type="radio"/>	<input type="radio"/>	Replace the motor.*
Wrong tubing or poor connection	<input type="radio"/>	<input type="radio"/>	<input type="radio"/>	<input type="radio"/>	Check and fix tubing.
Pump head mounting screws are loose.	<input type="radio"/>	<input type="radio"/>	<input type="radio"/>	<input type="radio"/>	Tighten the screws.
Diaphragm insertion is loose.	<input type="radio"/>	<input type="radio"/>	<input type="radio"/>	<input type="radio"/>	Tighten diaphragm.
Diaphragm is damaged.	<input type="radio"/>	<input type="radio"/>	<input type="radio"/>	<input type="radio"/>	Replace diaphragm.
Filter is clogged.	<input type="radio"/>	<input type="radio"/>	<input type="radio"/>	<input type="radio"/>	Remove foreign matters.
Valve is worn.	<input type="radio"/>	<input type="radio"/>	<input type="radio"/>	<input type="radio"/>	Replace the valve.
Front cover/diaphragm screws are loose.	<input type="radio"/>	<input type="radio"/>	<input type="radio"/>	<input type="radio"/>	Secure them.
Eccentric shaft has worn.	<input type="radio"/>	<input type="radio"/>	<input type="radio"/>	<input type="radio"/>	Replace the connecting rod unit.*
Connecting rod bearing has worn.	<input type="radio"/>	<input type="radio"/>	<input type="radio"/>	<input type="radio"/>	Replace the connecting rod unit.*
Motor bearing has worn.	<input type="radio"/>	<input type="radio"/>	<input type="radio"/>	<input type="radio"/>	Replace the motor.*
Voltage reduction	<input type="radio"/>	<input type="radio"/>	<input type="radio"/>	<input type="radio"/>	Increase voltage to the rated level.
Higher suction pressure than atmospheric	<input type="radio"/>	<input type="radio"/>	<input type="radio"/>	<input type="radio"/>	Reduce suction pressure.

Contact us for the measures marked with *.

2. Maintenance & Inspection

Handling of the pump, maintenance and inspection should be carried out within the descriptions of this instruction manual.

It is not the manufacturer's responsibility for personal injury or property damage resulting from unauthorized service. Contact us or your nearest distributor as necessary.

■ Daily inspection

Check the following points every day. If you notice any abnormal or dangerous conditions, suspend operation immediately and remove problems according to the troubleshooting section. When wear parts come to the life limit, replace them by new ones. Contact your distributor for detail.

No.	Check that:	Measure
1	pump operation is normal.	<ul style="list-style-type: none"> • Apply correct voltage and amperage. • Adjust discharge/suction pressure.
2	there is no noise or vibration problem.	<ul style="list-style-type: none"> • Unusual noise/vibration may occur when pump operation is not normal.
3	there is no air leak or air ingress from pump parts and tubing connections.	<ul style="list-style-type: none"> • Retighten connections.

Maintenance

■ Wear parts

If pump performance has remarkably reduced, replace diaphragms and valves with new ones. Wear part duration varies with the pressure, temperature and characteristics of gas.

Values in the table below are collected in continuous operation at the rated voltage and 20°C ambient temperature with 20°C gas.

Pump models	Load range	Estimated life	
		Valve	Diaphragm
APN-215/-S215/P215MV APN-215/-P215CV APN-215/-P215NV	All range	8000hr	8000hr
APN-215/-P215ME	101.32-79.98kPa (abs.)	8000	8000
	79.98-26.66kPa (abs.)	3000	6000
	26.66kPa (abs.) or below	6000	8000
APN-S215ME	101.32-79.98kPa (abs.)	8000	8000
	79.98-8.00kPa (abs.)	1000	3000
	8.00kPa (abs.) or below	6000	6000
APN-215/-P215CE	0-0.10MPa	6000	8000
	0.10-0.20MPa	3000	6000
APN-215/-P215NE	0-0.05MPa	6000	8000
	0.05-0.10MPa	3000	6000
	101.32-79.98kPa (abs.)	8000	8000
	79.98-40.00kPa (abs.)	3000	6000
	40.00kPa (abs.) or below	6000	8000

*The above lives are reference values and not warranted.

Maintenance

3. Wear part replacement

For a long period of operation wear parts need to be replaced periodically.



CAUTION

- **Turn off power before service**

Risk of electrical shock. Be sure to turn off power to stop the pump and related devices before service is performed.

- **Do not touch the pump or pipe with bare hands**

Risk of burning. The surface temperature of the pump or pipe gets high in or right after operation.

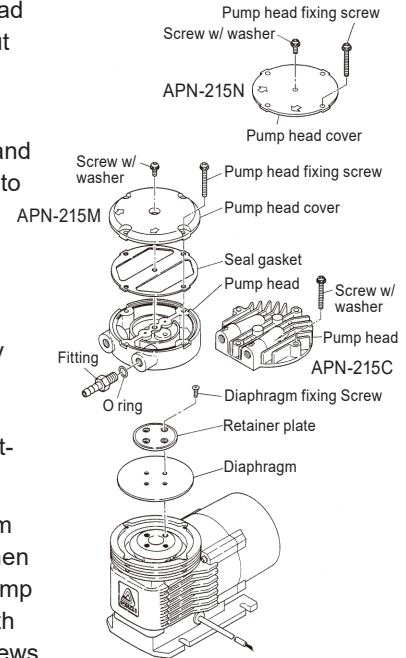
- **Wear protective clothing**

Always wear protective clothing such as an eye protection, chemical resistant gloves, a mask and a face shield during disassembly, assembly or maintenance work.

See page 11 the "**8. Part names & Structure**" section as necessary.

■ Diaphragm replacement

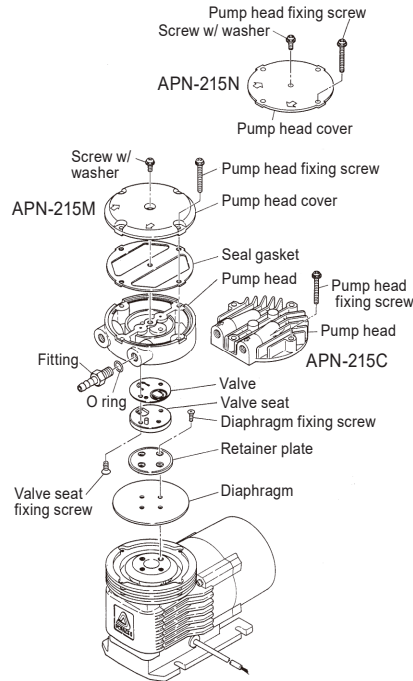
1. Unscrew all the pump head fixing screws and take out the pump head, retainer plate and diaphragm.
2. Place a new diaphragm and then the retainer plate onto the connecting rod.
3. Apply the LOCTITE® 222 to the four diaphragm fixing screws and tighten by $0.78\text{N}\cdot\text{m}$ so as to secure the retainer plate and the diaphragm to the connecting rod.
4. Push down the diaphragm until it bottoms out and then mount and secure the pump head onto the bracket with the pump head fixing screws by $1.47\text{N}\cdot\text{m}$.



Maintenance

■ Valve replacement

1. Unscrew all the pump head fixing screws and take out the pump head.
2. Unscrew the two valve seat fixing screws to remove the valve seat and the valve.
3. Replace the new valve and valve seat in place.
4. Apply the LOCTITE® 222 to the valve seat fixing screws and tighten it by $0.3\text{N}\cdot\text{m}$ so as to secure the valve and the valve seat to the pump head.
5. Push down the diaphragm until it bottoms out and then mount and secure the pump head onto the the bracket with the pump head fixing screws by $1.47\text{N}\cdot\text{m}$.



NOTE1. Do not loosen the motor fixing screws during maintenance work.

NOTE2. Contact your nearest distributor for the replacement of the connecting rod and the motor.

EC DECLARATION OF CONFORMITY

A copy of the original Declaration of Conformity

(SUPPLIER'S NAME)

WE
IWAKI CO.,LTD.

(ADDRESS)

6-6 2-CHOME KANDA-SUDACHO CHIYODA-KU TOKYO JAPAN

(PRODUCT)

DECLARE UNDER OUR SOLE RESPONSIBILITY THAT THE PRODUCTS
AIR PUMP

(MODEL NAME)

APN SERIES AC TYPE

TO WHICH THIS DECLARATION RELATES ARE IN CONFORMITY
WITH THE FOLLOWING STANDARDS OR DIRECTIVES AS FAR AS APPLICABLE

(DIRECTIVES)

MACHINERY DIRECTIVE 2006/42/EC (ANNEX IIA)
RoHS DIRECTIVE 2011/65/EU

(STANDARDS)

EN ISO12100: 2010 EN1012-1: 2010
EN IEC63000: 2018 EN1012-2: 1996 + A1: 2009

(A PERSON WHO IS AUTHORISED TO COMPILE THE TECHNICAL FILE
IN THE COMMUNITY)

IWAKI EUROPE GMBH
SIEMENSRING 115 D-47877 WILlich GERMANY

NOTE: THIS DECLARATION BECOMES INVALID IF TECHNICAL OR OPERATIONAL
MODIFICATIONS ARE INTRODUCED WITHOUT THE MANUFACTURER'S
CONSENT.

Y. Sawada.

TSUTOMU SAWADA
DEPUTY SENIOR GENERAL MANAGER,
QUALITY ASSURANCE HEAD OFFICE

Tokyo, Sep. 13, 2021

(PLACE AND DATE OF ISSUE)

(NAME AND SIGNATURE OR EQUIVALENT MARKING OF AUTHORIZED PERSON)

DOCUMENT NO. IS-51K-541-3

Waste Electrical and Electronic Equipment (WEEE)



In accordance with the European Directive 2012/19/EU on waste electrical and electronic equipment, this product features the crossed-out wheellie bin symbol. When this product is disposed of in household wastes, toxic components included in it can cause major environmental and human health problems. Use appropriate waste collection systems for recovery and recycling. Contact your local distributor or nearest Iwaki company for the detailed collection systems.



<https://www.iwakipumps.jp>

IWAKI CO.,LTD. 6-6 Kanda-Sudacho 2-chome Chiyoda-ku Tokyo 101-8558 Japan
TEL: +81 3 3254 2935 FAX: +81 3 3252 8892

European Headquarter / IWAKI Europe GmbH
TEL: +49 2154 9254 0 FAX: +49 2154 9254 48

Germany / IWAKI Europe GmbH
TEL: +49 2154 9254 50 FAX: +49 2154 9254 55

The Netherlands / IWAKI Europe GmbH (Netherlands Branch)
TEL: +31 74 2420011 FAX: +49 2154 9254 48

Italy / IWAKI Europe GmbH (Italy Branch)
TEL: +39 0445 561219 FAX: +39 0445 569088

Spain / IWAKI Europe GmbH (Spain Branch)
TEL/FAX: +34 934 741 638

Poland / IWAKI Europe GmbH (East Europe Branch)
TEL: +48 12 347 0755 FAX: +48 12 347 0900

Belgium / IWAKI Belgium N.V.
TEL: +32 13 670200 FAX: +32 13 672030

Denmark / IWAKI Nordic A/S
TEL: +45 48 242345

Finland / IWAKI Suomi Oy
TEL: +358 10 201 0490

France / IWAKI France S.A.
TEL: +33 1 69 63 33 70 FAX: +33 1 64 49 92 73

Norway / IWAKI Norge AS
TEL: +47 23 38 49 00

Sweden / IWAKI Sverige AB
TEL: +46 8 511 72900

U.S.A. / IWAKI America Inc.
TEL: +1 508 429 1440 FAX: +1 508 429 1386

Argentina / IWAKI America Inc. (Argentina Branch)
TEL: +54 911 6477 4116

Brazil / IWAKI Do Brasil Comercio De Bombas Hidraulicas LTDA.
TEL/FAX: +55 19 3244 5900

Singapore / IWAKI Singapore Pte Ltd.
TEL: +65 6316 2028 FAX: +65 6316 3221

Indonesia / IWAKI Singapore (Indonesia Office)
TEL: +62 21 6906606 FAX: +62 21 6906612

Malaysia / IWAKIIm SDN. BHD.
TEL: +60 3 7803 8807 FAX: +60 3 7803 4800

Australia / IWAKI Pumps Australia Pty Ltd.
TEL: +61 2 9899 2411 FAX: +61 2 9899 2421

China (Hong Kong) / IWAKI Pumps Co., Ltd.
TEL: +852 2607 1168 FAX: +852 2607 1000

China (Guangzhou) / GFTZ IWAKI Engineering & Trading Co., Ltd.
TEL: +86 20 84350603 FAX: +86 20 84359181

China (Shanghai) / IWAKI Pumps (Shanghai) Co., Ltd.
TEL: +86 21 6272 7502 FAX: +86 21 6272 6929

Korea / IWAKI Korea Co., Ltd.
TEL: +82 2 2630 4800 FAX: +82 2 2630 4801

Taiwan / IWAKI Pumps Taiwan Co., Ltd.
TEL: +886 2 8227 6900 FAX: +886 2 8227 6818

Thailand / IWAKI (Thailand) Co., Ltd.
TEL: +66 2 322 2471 FAX: +66 2 322 2477